

VeDAS Implementation	Database Administration
User Manual - DP	

3 Database Administration

3.1 Purpose

The Database Administration application is used to set certain static parameters required for operating the VeDAS application and most importantly configure user related Information. The static parameters that are required to be setup are Gateway, Workstation, User Securities and Purge days.

In order to provide access to any person to the VeDAS system a User needs to be created. This User has to be assigned to an appropriate User Class. Also the profile for such classes should be configured according to the privileges available to the class. The DBA module enables a User to carry out all such functions.

3.2 Modes of Operation

Operations related to workstations and users can be performed only in online mode. All the remaining operations can be performed in online as well as offline mode.

3.3 Access Restrictions

Access to this module is available to CDBL as well as to all DPs/Issuers depending upon the rights given to them by the ADMIN user.

3.4 Screen Layout

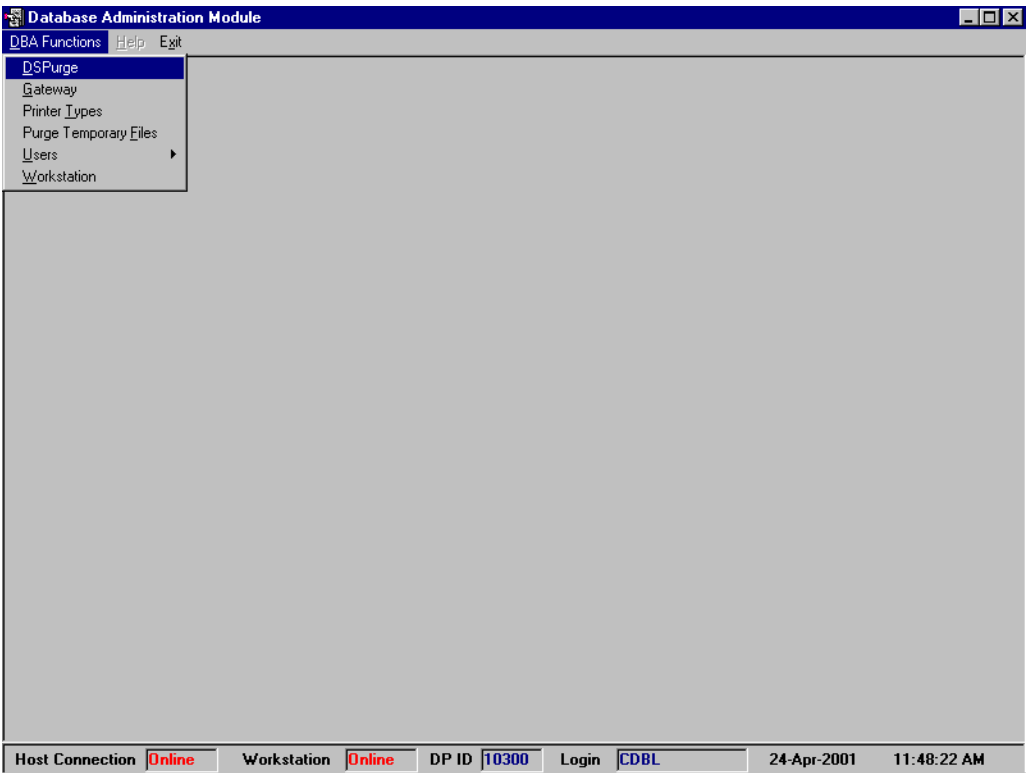


Figure 3.1 Initial screen for DBA module

3.4.1 DS Purge

Activation Options

Menu Name	Purpose	Hot Key
DBA Functions > DS Purge	To modify purge days	Alt + D > D

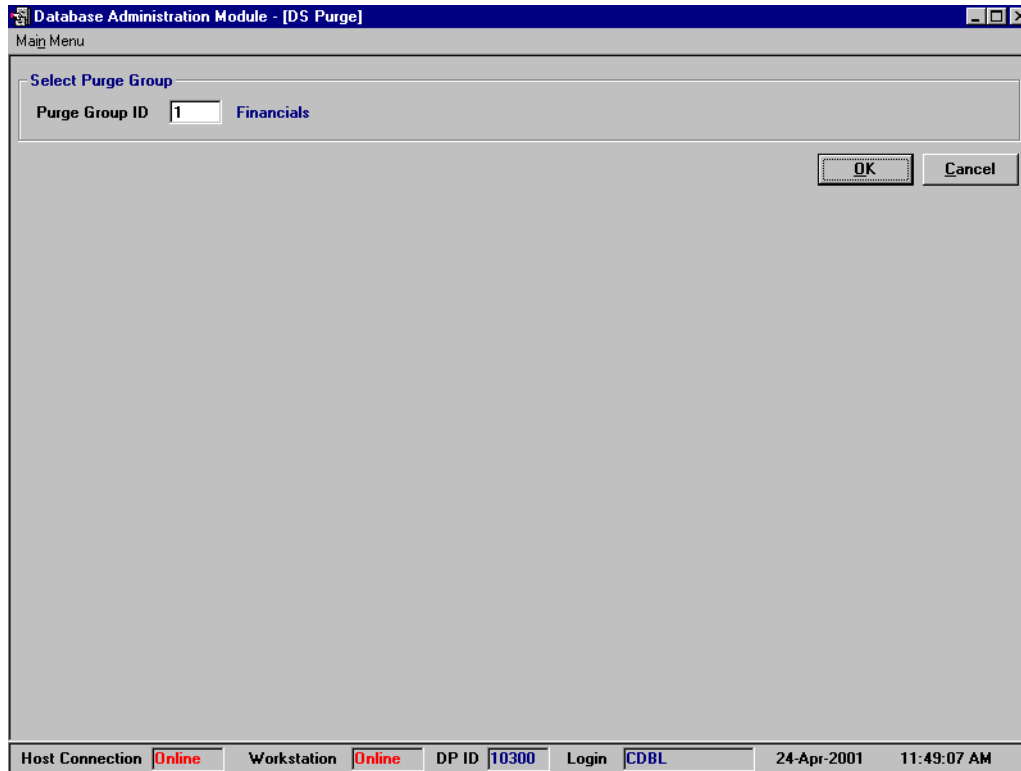


Figure 3.2 Initial screen for DS purge

Modify Selection Criteria

Selection Option	Fields	Selection Type
Purge Group ID	Purge Group ID	This is a mandatory criterion

Buttons Available

Name	Purpose	Hot Key
OK	To show the record for the selected Purge Group ID	Alt + O
Cancel	To cancel the operation and return to the previous screen	Alt + C

Figure 3.3 Screen for DS purge

Field List

Field Type: U-Unique, M-Mandatory, A-Auto generated, Mo-Modifiable, N-Non Modifiable, R-Retrieved, C-Calculated

Field Name	Description	Field Type	Remarks
Purge Days	Number of days during which the group can be purged.	Mo	

Buttons Available

Name	Purpose	Hot Key
Commit	To commit the transaction	Alt + O
Cancel	To cancel the operation and return to the previous screen	Alt + C

3.4.2 Gateway

Activation Options

Menu Name	Purpose	Hot Key
DBA Functions > Gateway	To modify/inquire Gateway details	Alt + D > G

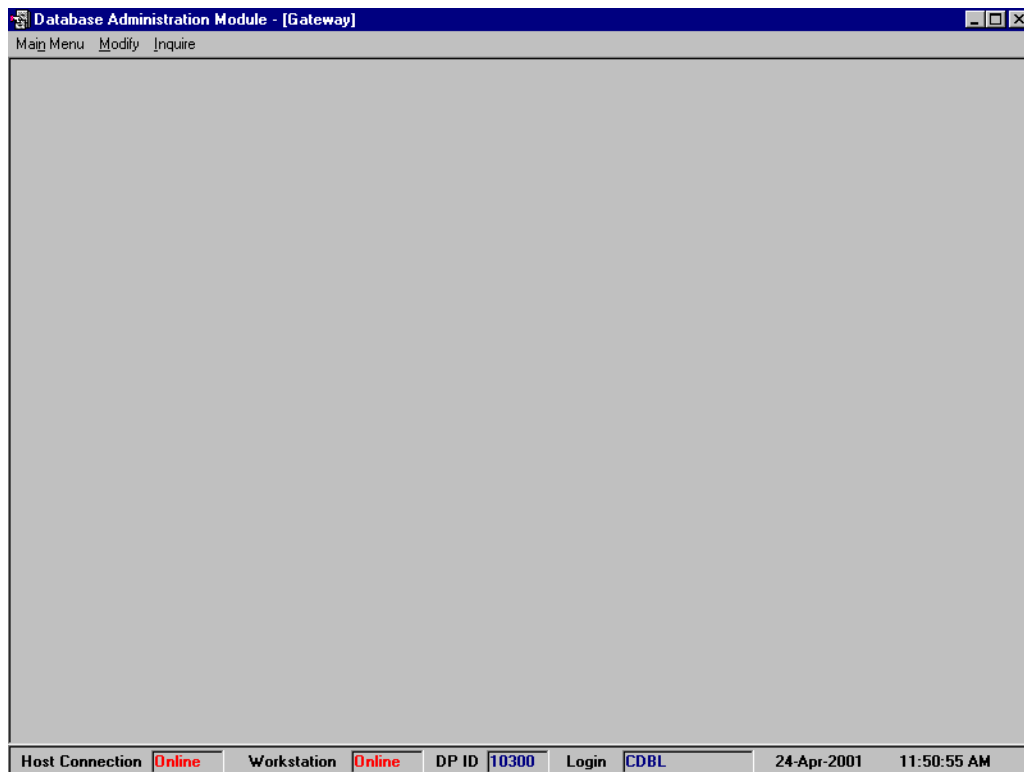


Figure 3.4 Initial screen for Gateway details

Modify

Activation Options

Menu Name	Purpose	Hot Key
Modify	To modify Gateway details	Alt + M

Figure 3.5 Initial screen for Gateway details modify

Modify Selection Criteria

Selection Option	Fields	Selection Type
Gateway ID	Gateway ID	This is a mandatory criterion

Buttons Available

Name	Purpose	Hot Key
OK	To show the details of the selected Gateway ID.	Alt + O
Cancel	To cancel the operation and return to the previous screen	Alt + C

Database Administration Module - [Gateway - Modify]

Main Menu Modify Inquire

Gateway ID: CGS1

IP Address: 172.20.6.104

Port Number: 4500

Physical Address: MANJUSHA

Commit Cancel

Host Connection Online Workstation Online DP ID 1 Login MIDC 22-Apr-2001 02:00:58 PM

Figure 3.6 Screen for Gateway details modify

Field List

Field Type: U-Unique, M-Mandatory, A-Auto generated, Mo-Modifiable, N-Non Modifiable, R-Retrieved, C-Calculated

Field Name	Description	Field Type	Remarks
IP Address	Internet Protocol Address of the machine on which the CGS (Gateway) is installed	M, Mo	
Port Number	Port Number to which the CGS connects	M, Mo	
Physical Address	Workstation name	M, Mo	

Buttons Available

Name	Purpose	Hot Key
Commit	To commit the transaction	Alt + O
Cancel	To cancel the operation and return to the previous screen	Alt + C

VeDAS Implementation	Database Administration
User Manual - DP	

Inquire

Activation Options

Menu Name	Purpose	Hot Key
Inquire	To inquire Gateway details	Alt + I

Database Administration Module - [Gateway - Inquire]

Main Menu Modify Inquire

Select Gateway ID

Gateway ID CGS2

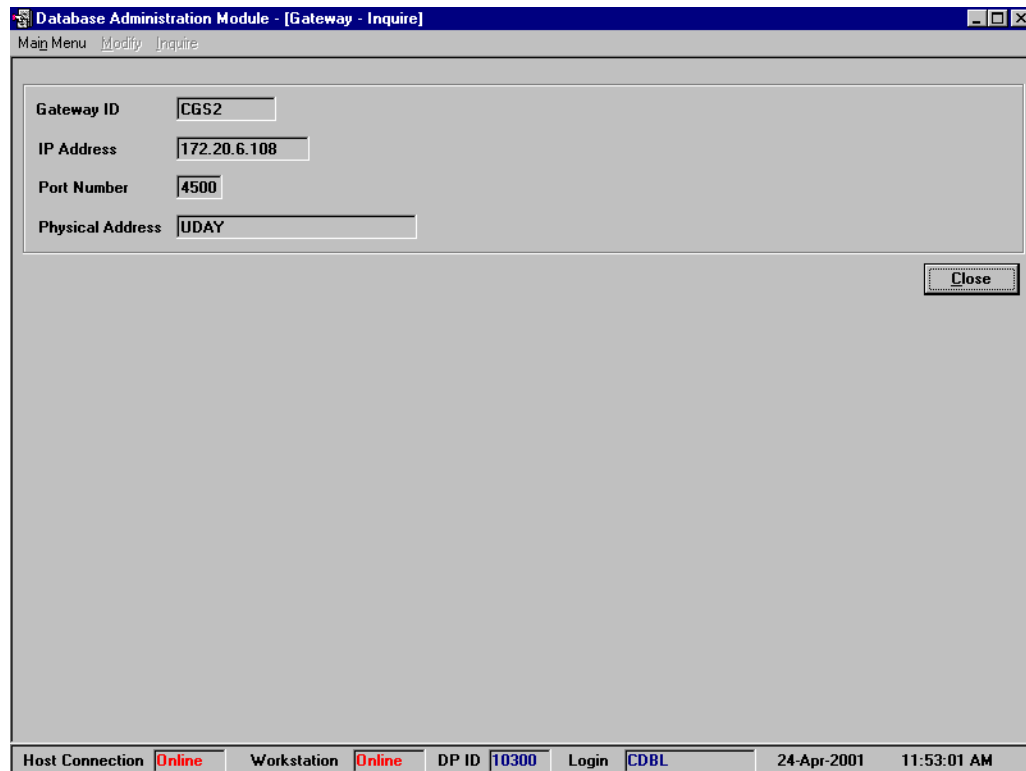
OK Cancel

Host Connection Online Workstation Online DP ID 10300 Login CDBL 24-Apr-2001 11:52:28 AM

Figure 3.7 Initial screen for Gateway details inquiry

Inquiry Selection Criteria

Refer to selection criteria for modify transaction



Database Administration Module - [Gateway - Inquire]

Main Menu Modify Inquire

Gateway ID: CGS2

IP Address: 172.20.6.108

Port Number: 4500

Physical Address: UDAY

Close

Host Connection: Online Workstation: Online DP ID: 10300 Login: CDBL 24-Apr-2001 11:53:01 AM

Figure 3.8 Screen for Gateway details inquiry

Buttons Available

Name	Purpose	Hot Key
Close	To return to the previous screen	Alt + C

3.4.3 Printer Types

Activation Options

Menu Name	Purpose	Hot Key
DBA Functions > Printer Types	To act upon printer details	Alt + D > T

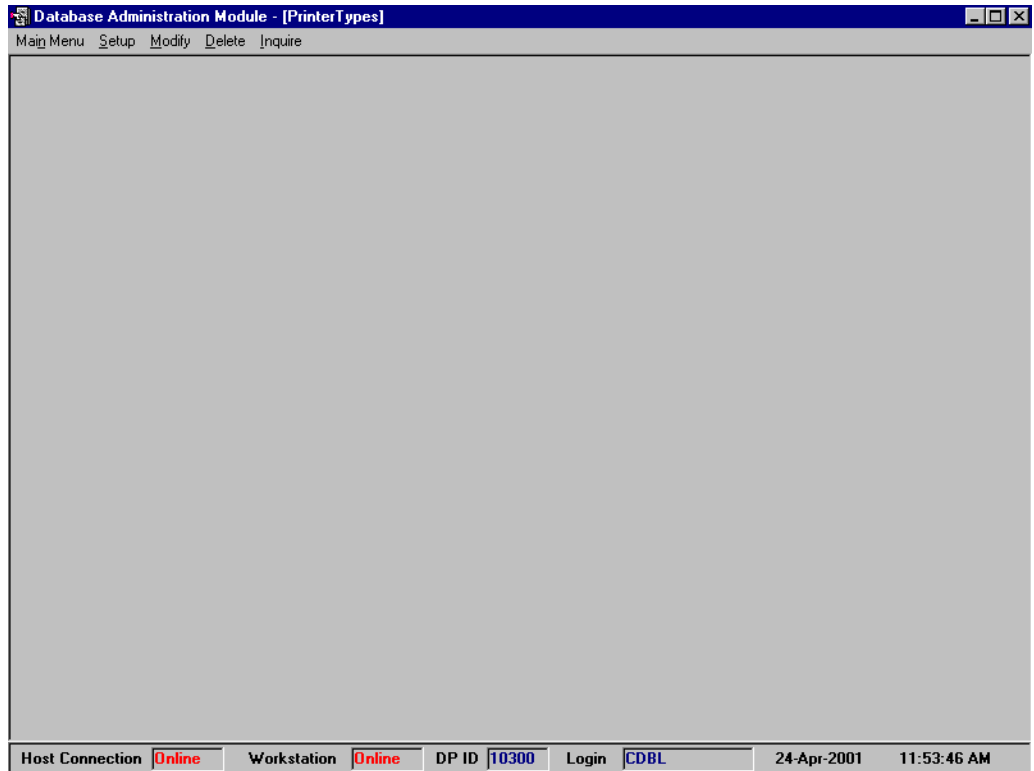


Figure 3.9 Initial screen for Printer Types

Setup

Activation Options

Menu Name	Purpose	Hot Key
Setup	To setup printer details	Alt + S

Figure 3.10 Screen for Printer Types Setup

Field List

Field Type: U-Unique, M-Mandatory, A-Auto generated, Mo-Modifiable, N-Non Modifiable, R-Retrieved, C-Calculated

Field Name	Description	Field Type	Remarks
Printer Name	Printer name to be selected from available options	M, Mo	
Orientation	Landscape or Portrait orientation can be specified	M, Mo	

Buttons Available

Name	Purpose	Hot Key
Commit	To commit the transaction	Alt + O
Cancel	To cancel the operation and return to the previous screen	Alt + C

Modify

Activation Options

Menu Name	Purpose	Hot Key
Modify	To modify printer details	Alt + M

Figure 3.11 Screen for Printer Types Modify

Buttons Available

Name	Purpose	Hot Key
Commit	To commit the transaction	Alt + O
Cancel	To cancel the operation and return to the previous screen	Alt + C

Delete

Activation Options

Menu Name	Purpose	Hot Key
Delete	To delete printer details	Alt + D

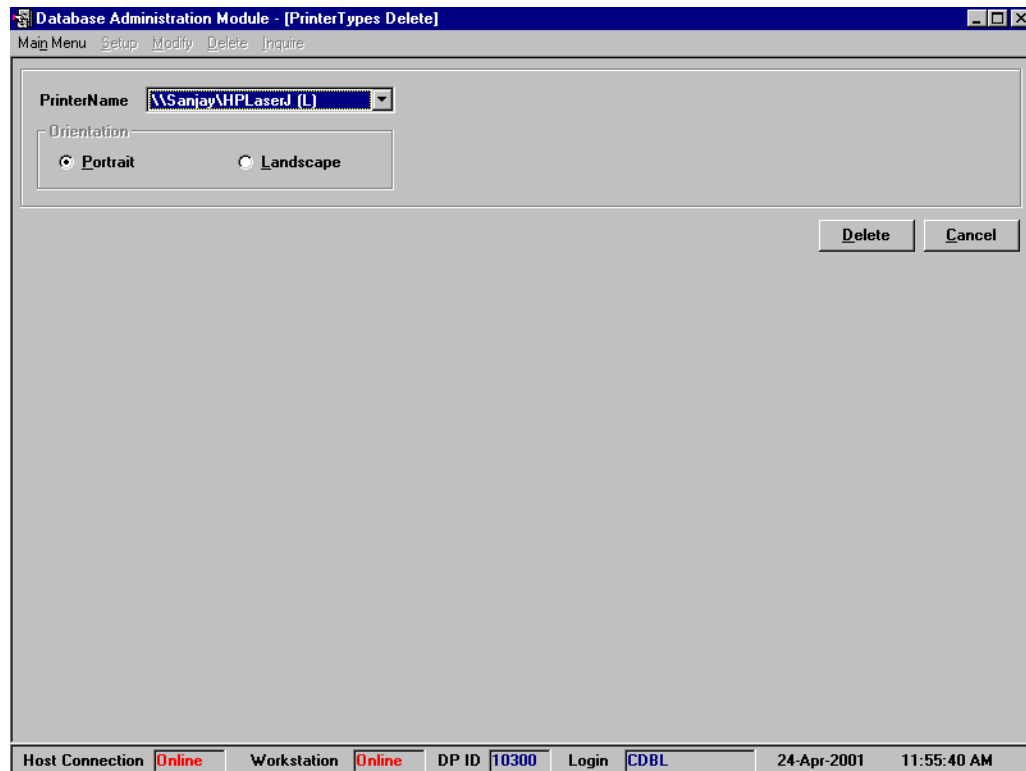


Figure 3.12 Screen for Printer Types Delete

Buttons Available

Name	Purpose	Hot Key
Delete	To delete the record for the selected printer	Alt + D
Cancel	To cancel the operation and return to the previous screen	Alt + C

Inquire

Activation Options

Menu Name	Purpose	Hot Key
Inquire	To inquire printer details	Alt + I

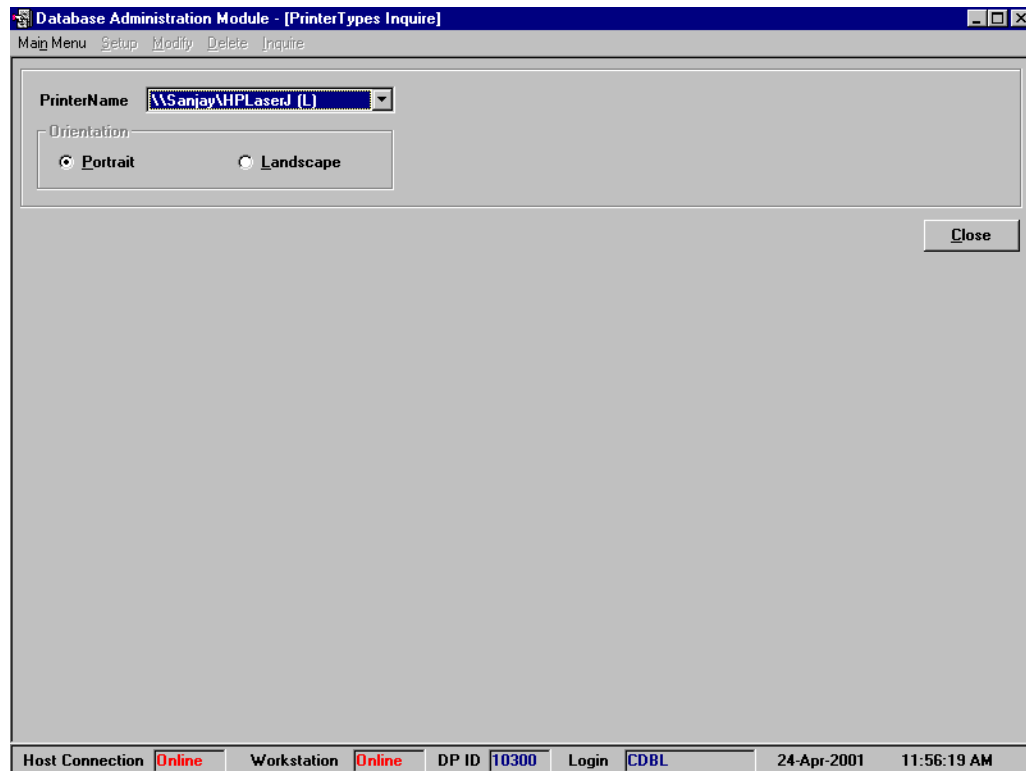


Figure 3.13 Screen for Printer Types Inquiry

Buttons Available

Name	Purpose	Hot Key
Close	To return to the previous screen	Alt + C

3.4.4 Purge Temporary Files

Activation Options

Menu Name	Purpose	Hot Key
DBA Functions > Purge Temporary Files	To remove temporary files created by VeDAS at regular intervals.	Alt + D > F

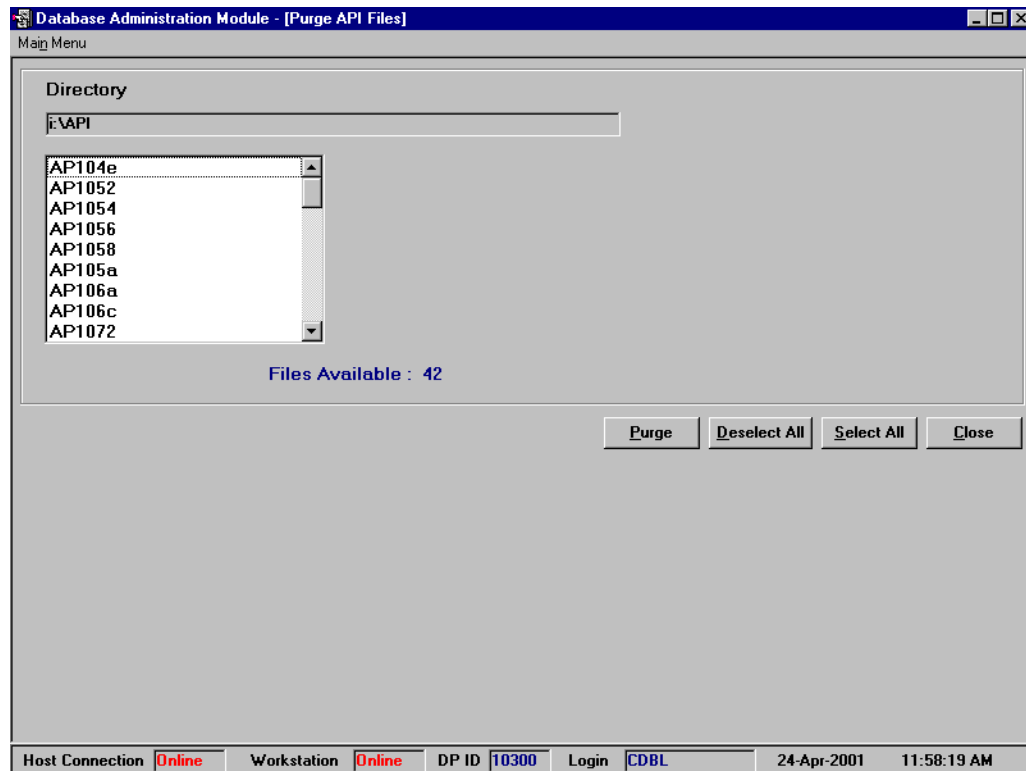


Figure 3.14 Screen to remove temporary files

Field List

Field Type: U-Unique, M-Mandatory, A-Auto generated, Mo-Modifiable, N-Non Modifiable, R-Retrieved, C-Calculated

Field Name	Description	Field Type	Remarks
Directory	Directory from which temporary files are to be purged	R, N	

Buttons Available

Name	Purpose	Hot Key
Purge	To purge the selected files	Alt + P
Deselect All	To deselect all the selected files in the specified directory	Alt + D
Select All	To select all temporary files in the specified directory	Alt + S
Close	To return to the previous screen	Alt + C

3.4.5 User Class Information

Activation Options

Menu Name	Purpose	Hot Key
DBA Functions > Users > User Class Information	To act upon the user class details	Alt + D > U > U

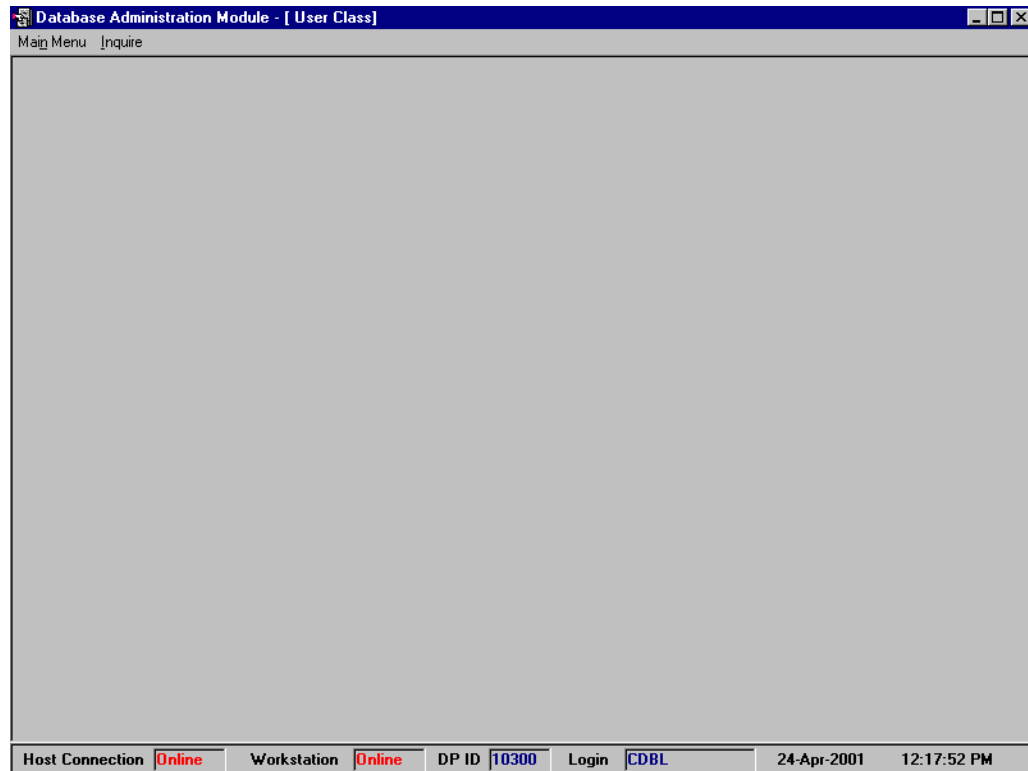


Figure 3.15 Initial screen for User Class Information

Inquire

Activation Options

Menu Name	Purpose	Hot Key
Inquire	To inquire User Class Information	Alt + I

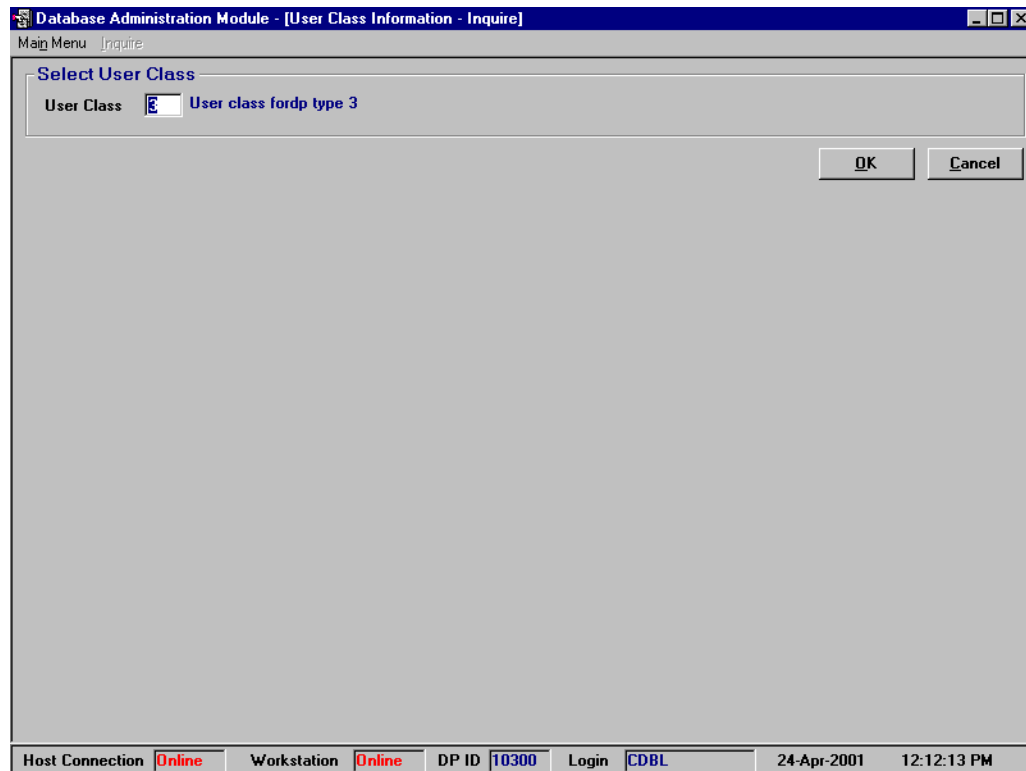


Figure 3.16 Initial screen for User Class Information Inquiry

Inquiry Selection Criteria

Selection Option	Fields	Selection Type
User Class	User Class	This is a mandatory criterion

Buttons Available

Name	Purpose	Hot Key
OK	To show the details of the given user class	Alt + O
Cancel	To cancel the operation and return to the previous screen	Alt + C

Database Administration Module - [User Class Information - Inquire]

Main Menu Inquire

User Class

User Class

DP Type Regular DP

Description

Week Day	Holiday	Session Start Time	Session End Time
Sunday	NO	00:00	23:59
Monday	NO	00:00	23:59
Tuesday	NO	00:00	23:59
Wednesday	NO	00:00	23:59
Thursday	NO	00:00	23:59
Friday	NO	00:00	23:59
Saturday	NO	00:00	23:59

Close

Host Connection Online Workstation Online DP ID 10300 Login CDBL 24-Apr-2001 12:12:57 PM

Figure 3.17 Screen for User Class Information Inquiry

Field List

Field Type: U-Unique, M-Mandatory, A-Auto generated, Mo-Modifiable, N-Non Modifiable, R-Retrieved, C-Calculated

Field Name	Description	Field Type	Remarks
User Class	User Class	R, N	
DP Type	DP Type of the user class	R, N	
Description	Description of the user class	R, N	
Week Day	Day of the week	A, N	
Holiday	Indicates whether the specified weekday is a holiday or not	R, N	
Session start time	Time at which the session can be started	R, N	
Session end time	Time at which the session has to be ended	R, N	

Buttons Available

Name	Purpose	Hot Key
Close	To return to the previous screen	Alt + C

3.4.6 User Information

Activation Options

Menu Name	Purpose	Hot Key
DBA Functions > Users > User Information	To act upon the user details	Alt + D > U > I

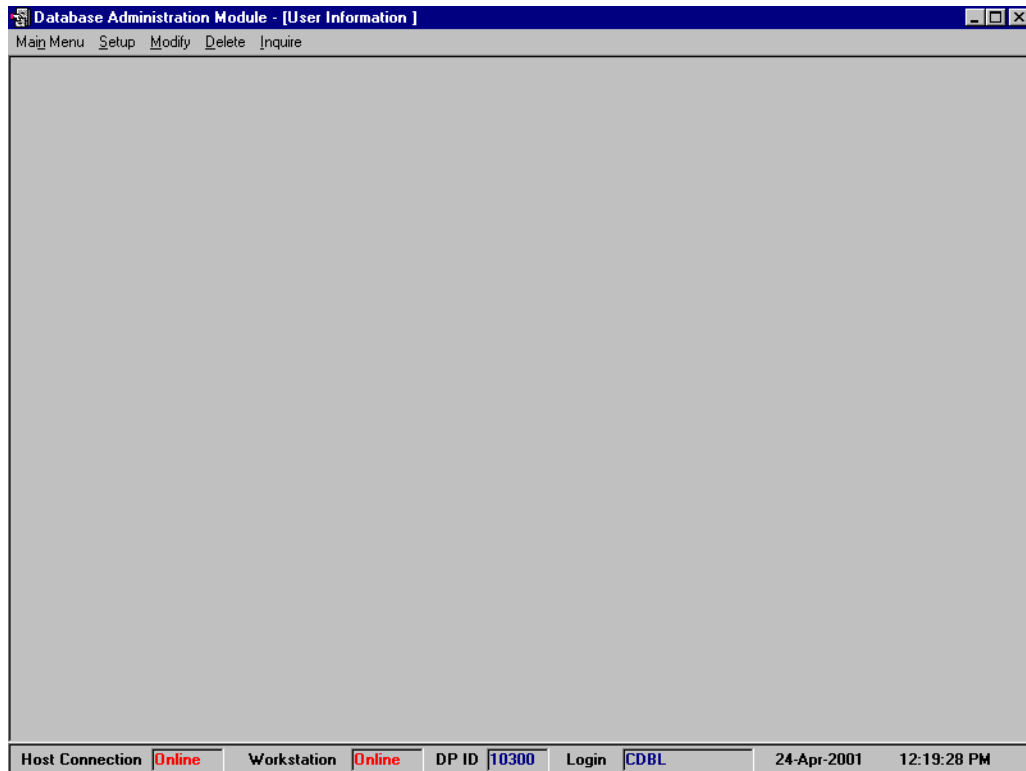


Figure 3.18 Initial screen for User Details

Setup

Activation Options

Menu Name	Purpose	Hot Key
Setup	To setup user details	Alt + S

Database Administration - [User Information - Setup]

Main Menu Setup Modify Delete Inquire

User Information

DP ID: 10300 Shailendra Hirekar

User ID:

User Class:

Login Name:

First Name:

Middle Name:

Last Name:

Telephone:

Week Day Pattern

Week Day	Holiday	Session Start Time	Session End Time
Sunday	<input checked="" type="checkbox"/>		
Monday	<input type="checkbox"/>		
Tuesday	<input type="checkbox"/>		
Wednesday	<input type="checkbox"/>		
Thursday	<input type="checkbox"/>		
Friday	<input type="checkbox"/>		
Saturday	<input type="checkbox"/>		

Status

☐ Active

☒ Inactive

☐ Permanently Inactive

Class Timings

Host Connection **Online** Workstation **Online** DP ID 10300 Login ADMIN 25-Sep-2002 12:29:15 PM

Figure 3.19 Screen for User Information Setup

Field List

Field Type: U-Unique, M-Mandatory, A-Auto generated, Mo-Modifiable, N-Non Modifiable, R-Retrieved, C-Calculated

Field Name	Description	Field Type	Remarks
DP ID	DP ID	R	
User ID	User ID	M, N	
User Class	User Class	M, Mo	
Login Name	Name that will be used as login name to start the master application	M, N	
First Name	First Name	M, Mo	
Middle Name	Middle Name	Mo	
Last Name	Last Name	Mo	
Telephone	Telephone Number	Mo	
Week Day	Day of the week	A, N	
Holiday	Indicates whether the week day is a holiday or not	M, Mo	
Session Start Time	Time at which the session can be started	M, Mo	
Session End Time	Time at which the session has to be ended	M, Mo	
Status	Indicates whether the user is Active/Inactive/Permanently Inactive	Mo	

VeDAS Implementation	Database Administration
User Manual - DP	

Buttons Available

Name	Purpose	Hot Key
Class Timings	To retrieve the timings setup for the selected user class	Alt + T
Commit	To commit the transaction	Alt + O
Cancel	To cancel the operation and return to the previous screen	Alt + C

Modify

Activation Options

Menu Name	Purpose	Hot Key
Modify	To modify user details	Alt + M

The screenshot displays the 'Database Administration Module - [User Information - Modify]' window. It features a menu bar with 'Main Menu', 'Setup', 'Modify', 'Delete', and 'Inquire'. The main area is titled 'User Information' and contains two input fields: 'DP ID' with the value '10300' and a 'Demat' button, and 'User ID' with the value 'ADMIN'. At the bottom right of the main area are 'OK' and 'Cancel' buttons. The status bar at the very bottom indicates 'Host Connection Online', 'Workstation Online', 'DP ID 10300', 'Login CDBL', and the timestamp '24-Apr-2001 12:21:49 PM'.

Figure 3.20 Initial screen for User Information Modify

Modify Selection Criteria

Selection Option	Fields	Selection Type
DP ID	DP ID	This is a mandatory criteria
User ID	User ID	This is a mandatory criteria

VeDAS Implementation	Database Administration
User Manual - DP	

Buttons Available

Name	Purpose	Hot Key
OK	To show the details of the User ID for the specified criteria	Alt + O
Cancel	To cancel the operation and return to the previous screen	Alt + C

Database Administration - [User Information - Modify]

Main Menu Setup Modify Delete Inquire

User Information

DP ID: 10300 Shailendra Hirlekar

User ID: ADMIN

User Class: ADMIN userclass for DP Type 2

Login Name: ADMIN

First Name: Shailendra Hirlekar

Middle Name: Shailendra Hirlekar

Last Name: Shailendra Hirlekar

Telephone:

Week Day	Holiday	Session Start Time	Session End Time
Sunday	NO	00:00	23:59
Monday	NO	00:00	23:59
Tuesday	NO	00:00	23:59
Wednesday	NO	00:00	23:59
Thursday	NO	00:00	23:59
Friday	NO	00:00	23:59
Saturday	NO	00:00	23:59

Class Timings

Status:

☐ Active

☒ Inactive

☐ Permanently Inactive

Commit Cancel

Host Connection: Online Workstation: Online DP ID: 10300 Login: ADMIN 25-Sep-2002 12:37:27 PM

Figure 3.21 Screen for User Information Modify

Buttons Available

Name	Purpose	Hot Key
Class Timings	To retrieve the timings setup for the selected user class.	Alt + T
Commit	To commit the transaction	Alt + O
Cancel	To cancel the operation and return to the previous screen	Alt + C

VeDAS Implementation	Database Administration
User Manual - DP	

Delete

Activation Options

Menu Name	Purpose	Hot Key
Delete	To delete user details	Alt + D

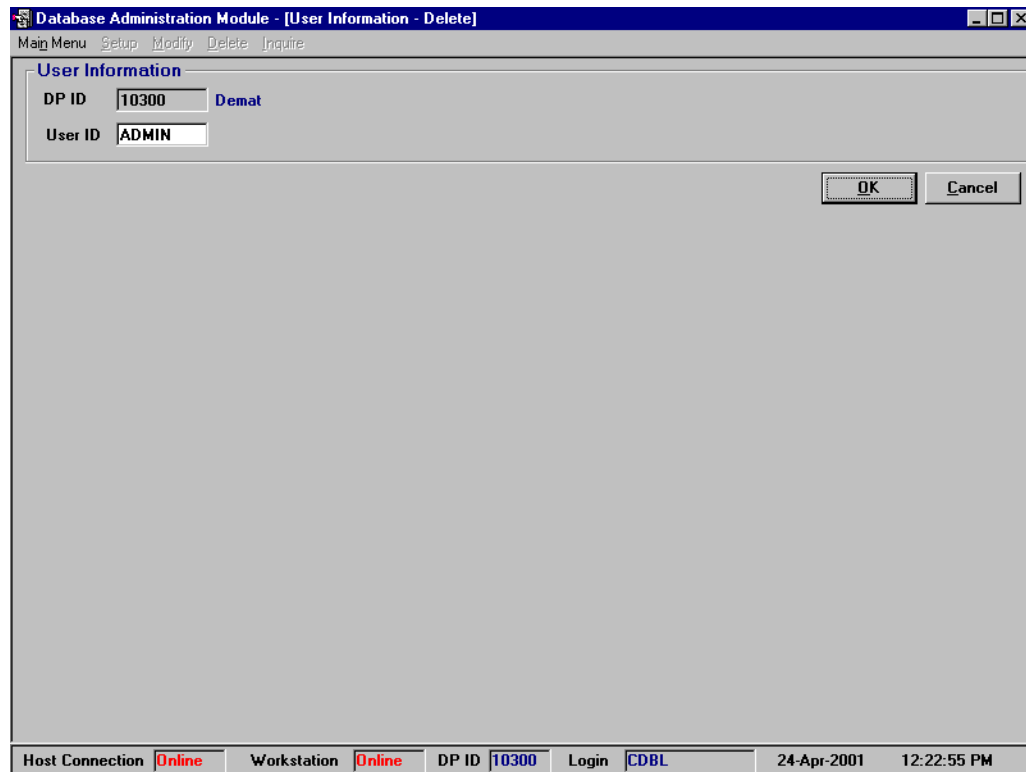


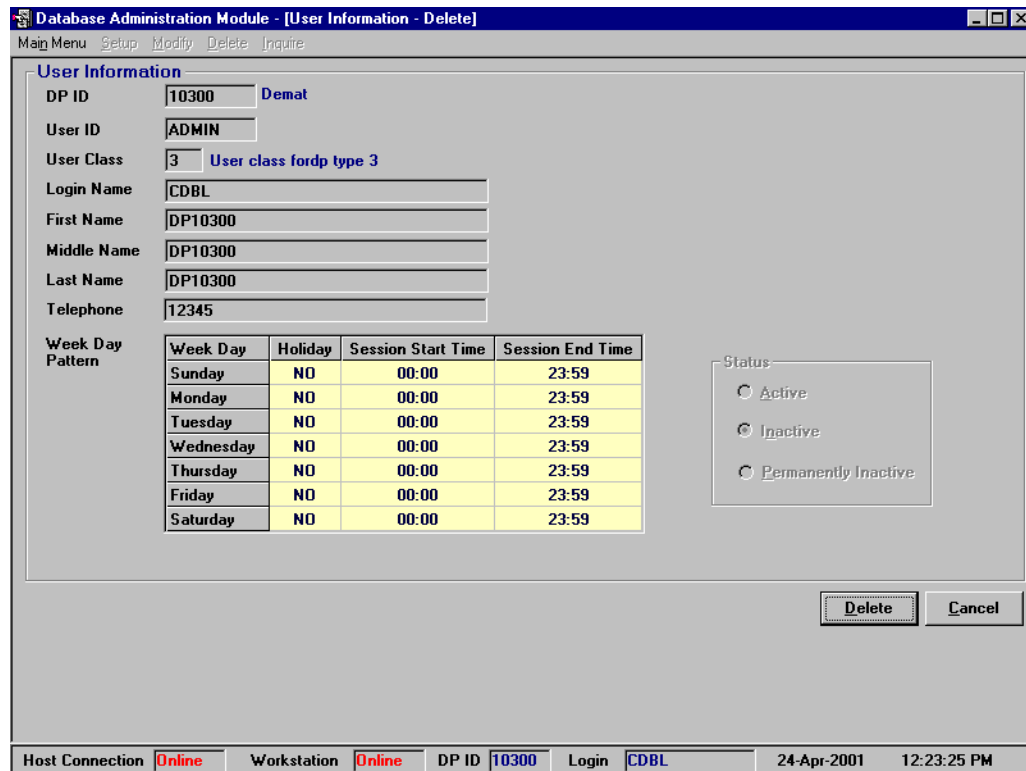
Figure 3.22 Initial screen for User Information Delete

Delete Selection Criteria

Refer to Selection criteria for Modify Transaction

Buttons Available

Name	Purpose	Hot Key
OK	To show the record for the specified criteria	Alt + O
Cancel	To cancel the operation and return to the previous screen	Alt + C



Database Administration Module - [User Information - Delete]

Main Menu Setup Modify Delete Inquire

User Information

DP ID: 10300 Demat

User ID: ADMIN

User Class: 3 User class fordp type 3

Login Name: CDBL

First Name: DP10300

Middle Name: DP10300

Last Name: DP10300

Telephone: 12345

Week Day	Holiday	Session Start Time	Session End Time
Sunday	NO	00:00	23:59
Monday	NO	00:00	23:59
Tuesday	NO	00:00	23:59
Wednesday	NO	00:00	23:59
Thursday	NO	00:00	23:59
Friday	NO	00:00	23:59
Saturday	NO	00:00	23:59

Status:

☐ Active

☒ Inactive

☐ Permanently Inactive

Delete Cancel

Host Connection Online Workstation Online DP ID 10300 Login CDBL 24-Apr-2001 12:23:25 PM

Figure 3.23 Screen for User Information Delete

Buttons Available

Name	Purpose	Hot Key
Delete	To delete the record for the selected user	Alt + O
Cancel	To cancel the operation and return to the previous screen	Alt + C

Inquire

Activation Options

Menu Name	Purpose	Hot Key
Inquire	To inquire user details	Alt + I

Figure 3.24 Initial screen for User Information Inquire

Inquiry Selection Criteria

Refer to Selection criteria for Modify Transaction

Buttons Available

Name	Purpose	Hot Key
OK	To show the details of the User ID for the specified criteria	Alt + O
Cancel	To cancel the operation and return to the previous screen	Alt + C

Database Administration Module - [User Information - Inquire]

Main Menu Setup Modify Delete Inquire

User Information

DP ID: 10300 Demat

User ID: ADMIN

User Class: 3 User class for dp type 3

Login Name: CDBL

First Name: ZAHEER

Middle Name:

Last Name: KHAN

Telephone: 565425

Week Day	Holiday	Session Start Time	Session End Time
Sunday	YES	00:00	00:00
Monday	NO	09:00	23:59
Tuesday	NO	09:00	23:59
Wednesday	NO	09:00	23:59
Thursday	NO	09:00	23:59
Friday	NO	09:00	23:59
Saturday	NO	09:00	23:59

Status:

☐ Active

☒ Inactive

☐ Permanently Inactive

Close

Host Connection: Online Workstation: Online DP ID: 10300 Login: CDBL 29-Apr-2001 01:52:12 PM

Figure 3.25 Screen for User Information Inquire

Buttons Available

Name	Purpose	Hot Key
Close	To cancel the operation and return to the previous screen	Alt + C

3.4.7 Setup Password

Activation Options

Menu Name	Purpose	Hot Key
DBA Functions > Users > Setup Password	To setup the password for a user	Alt + D > U > P

The screenshot shows a 'Setup Password' dialog box within the 'Database Administration Module'. The dialog box contains the following fields and buttons:

- DP ID:** 10300 (with a 'Demat' button next to it)
- Login ID:** ADMIN
- New Password:** *****
- Re-enter Password:** *****
- Buttons:** Commit, Cancel

The background window shows the 'DBA Functions' menu and a status bar at the bottom with the following information:

- Host Connection: Online
- Workstation: Online
- DP ID: 10300
- Login: CDBL
- Date/Time: 24-Apr-2001 02:00:18 PM

Figure 3.26 Screen for Password Setup

Field List

Field Type: U-Unique, M-Mandatory, A-Auto generated, Mo-Modifiable, N-Non Modifiable, R-Retrieved, C-Calculated

Field Name	Description	Field Type	Remarks
DP ID	DP ID	R	
Login ID	Login ID	M, N	
New Password	New Password	M, N	
Re-enter Password	The new password is to be re-entered for confirmation	M, N	

Buttons Available

Name	Purpose	Hot Key
Commit	To commit the transaction	Alt + O
Cancel	To cancel the operation and return to the previous screen	Alt + C

3.4.8 User Security

Activation Options

Menu Name	Purpose	Hot Key
DBA Functions > Users > User Security	To act upon the user security details	Alt + D > U > S

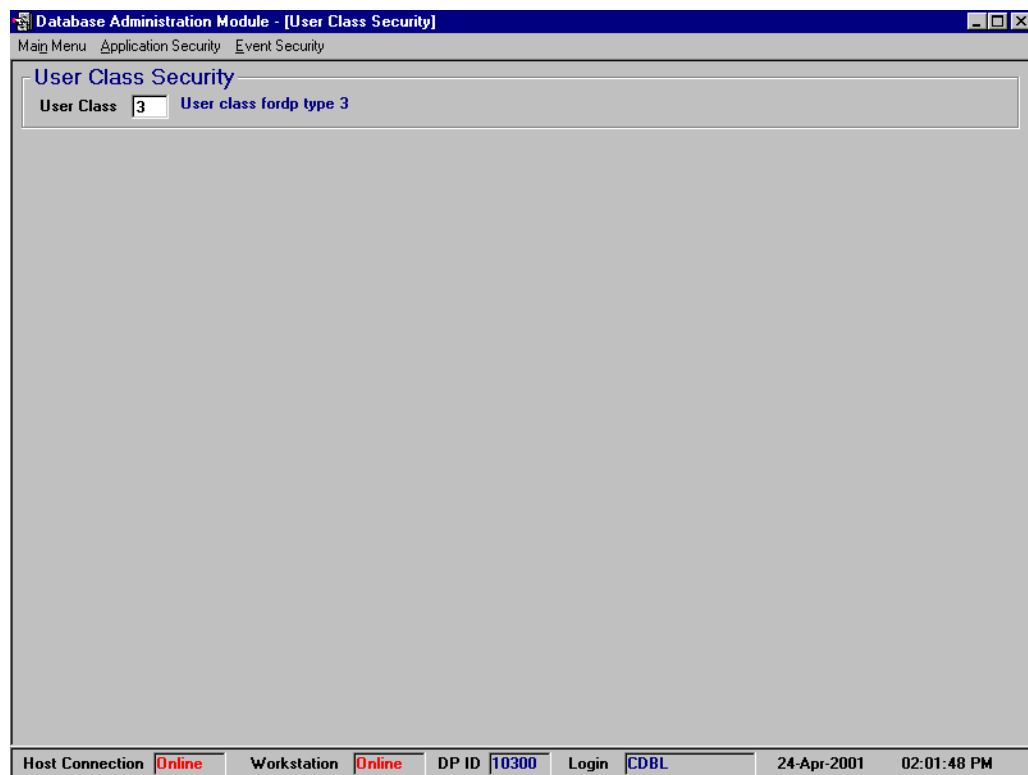


Figure 3.27 Initial screen for User Security details

Selection Criteria

Selection Option	Fields	Selection Type
User Class	User Class	This is a mandatory criterion

Application Security

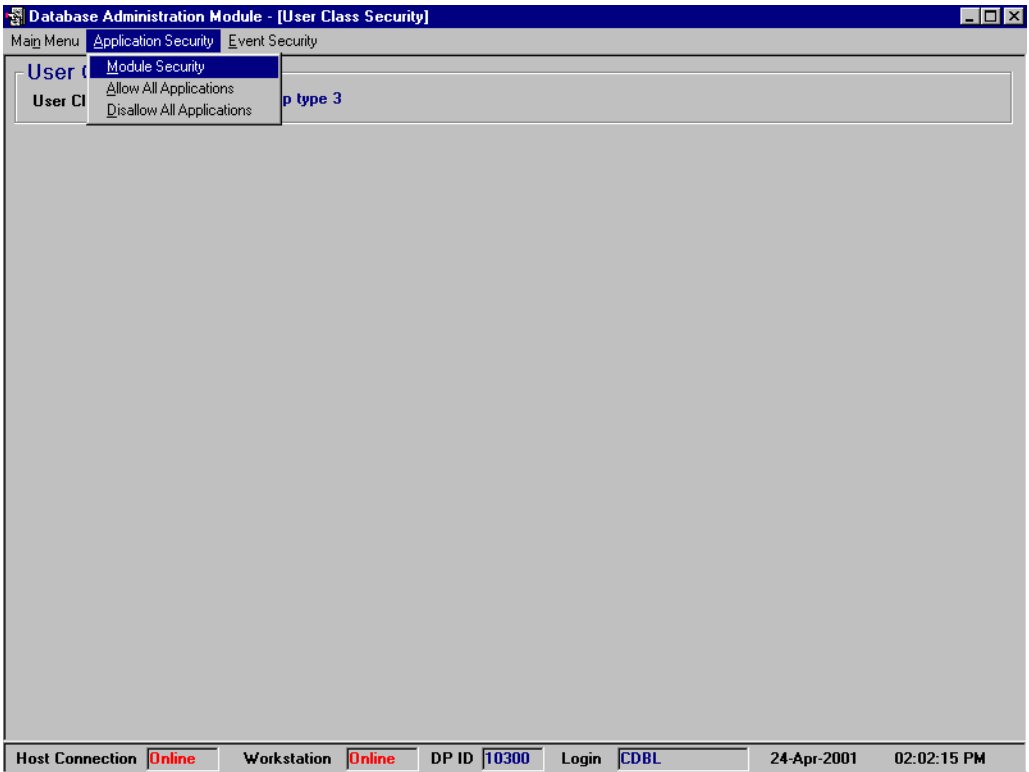


Figure 3.28 Initial screen for Application Security details

Module Security

Activation Options

Menu Name	Purpose	Hot Key
Application Security > Module Security	To act upon module security details	Alt + A > M

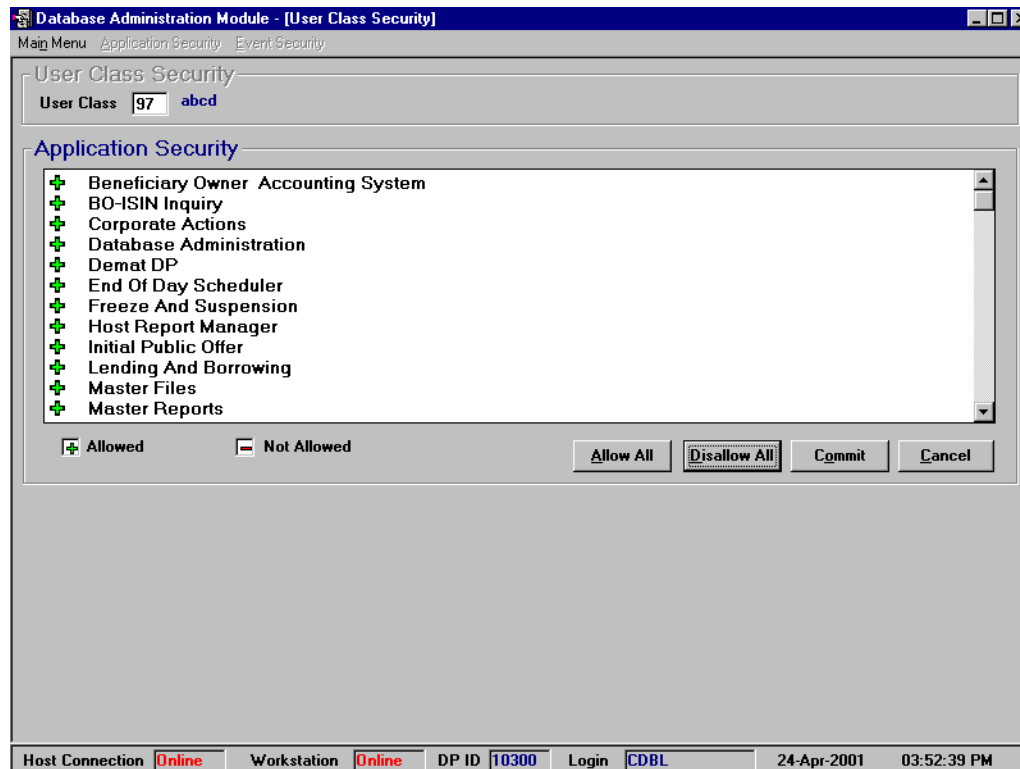


Figure 3.29 Screen for Module Security details

Field List

Field Type: U-Unique, M-Mandatory, A-Auto generated, Mo-Modifiable, N-Non Modifiable, R-Retrieved, C-Calculated

Field Name	Description	Field Type	Remarks
Allowed	Indicates that the "+" symbol is used to denote "Allowed" status	N	
Not Allowed	Indicates that the "-" symbol is used to denote "Not Allowed" status	N	

Buttons Available

Name	Purpose	Hot Key
Allow All	To allow the selected user class to access all applications	Alt + A
Disallow All	To disallow the selected user class to access all applications	Alt + D
Commit	To commit the transaction	Alt + O
Cancel	To cancel the operation and return to the previous screen	Alt + C

VeDAS Implementation	Database Administration
User Manual - DP	

Allow All Applications

Activation Options

Menu Name	Purpose	Hot Key
Application Security > Allow All Applications	To allow all applications	Alt + A > A

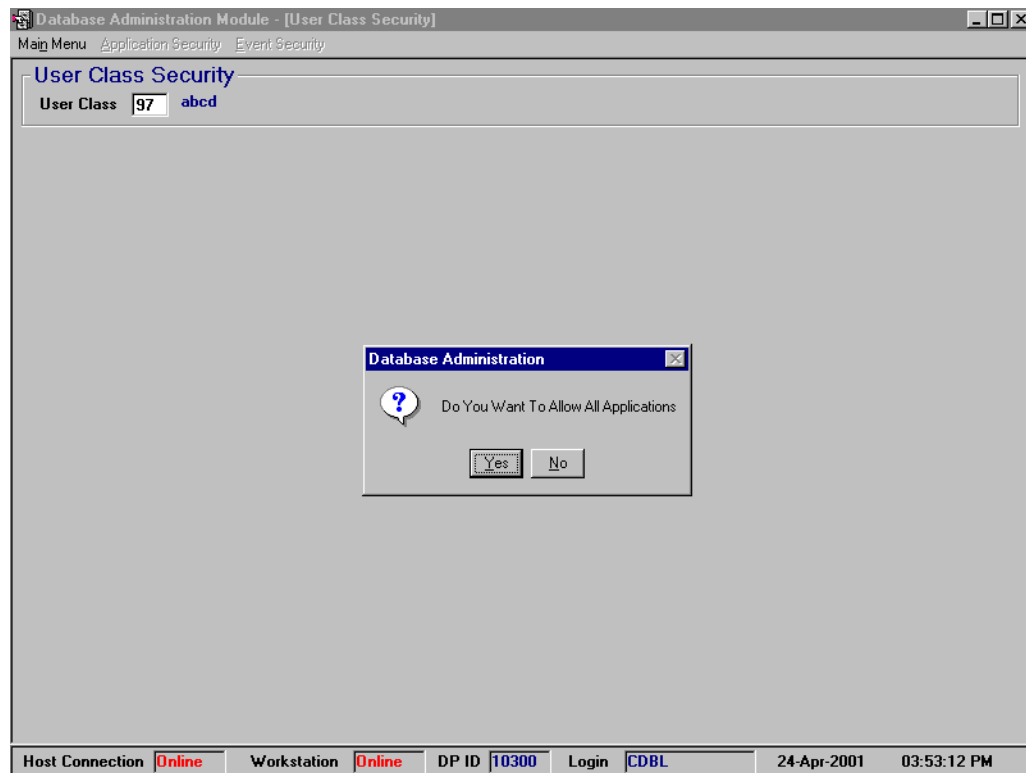


Figure 3.30 Screen to allow all applications

Buttons Available

Name	Purpose	Hot Key
Yes	To allow access to all applications for the selected user class	Alt + Y
No	To return to the previous screen	Alt + N

Disallow All Applications

Activation Options

Menu Name	Purpose	Hot Key
Application Security > Disallow All Applications	To disallow all applications	Alt + A > D

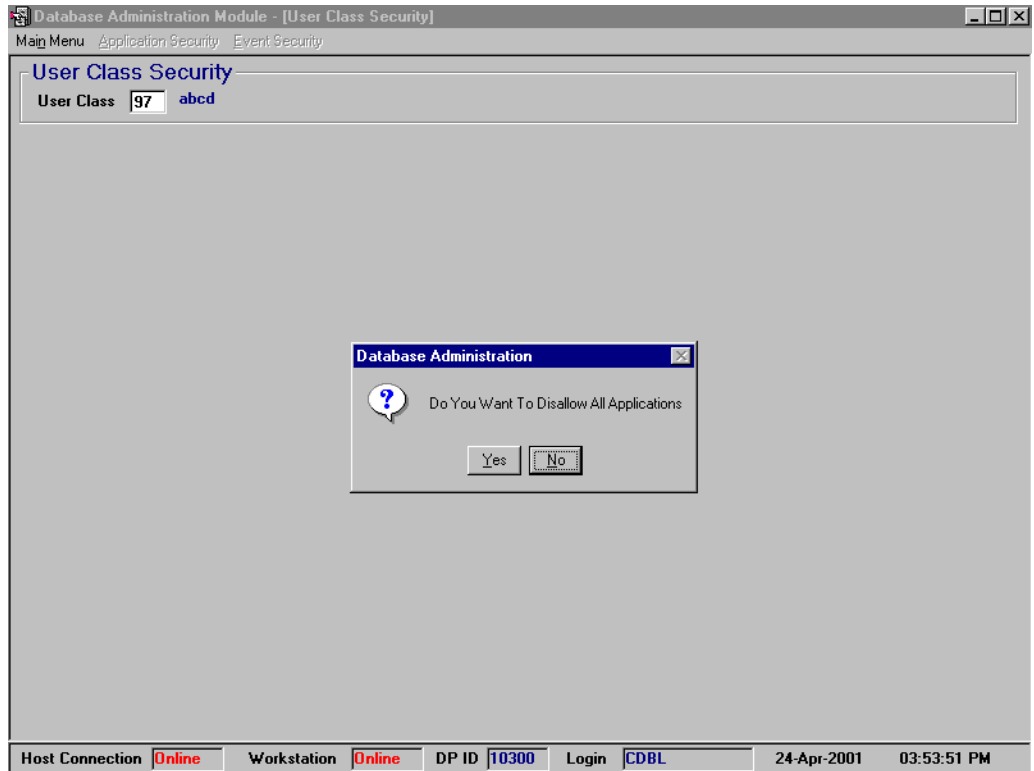


Figure 3.31 Screen to disallow all applications

Buttons Available

Name	Purpose	Hot Key
Yes	To disallow access to all applications for the selected user class	Alt + Y
No	To return to the previous screen	Alt + N

Event Security

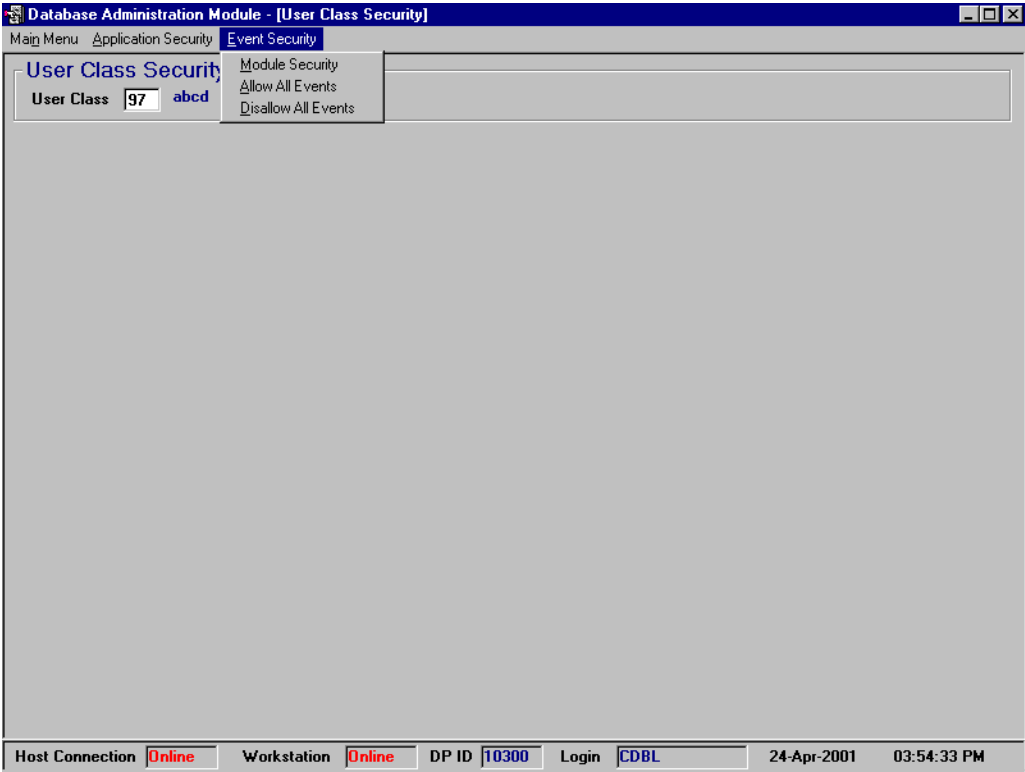


Figure 3.32 Initial screen for Event Security details

Module Security

Activation Options

Menu Name	Purpose	Hot Key
Event Security > Module Security	To act upon module security details	Alt + E > M

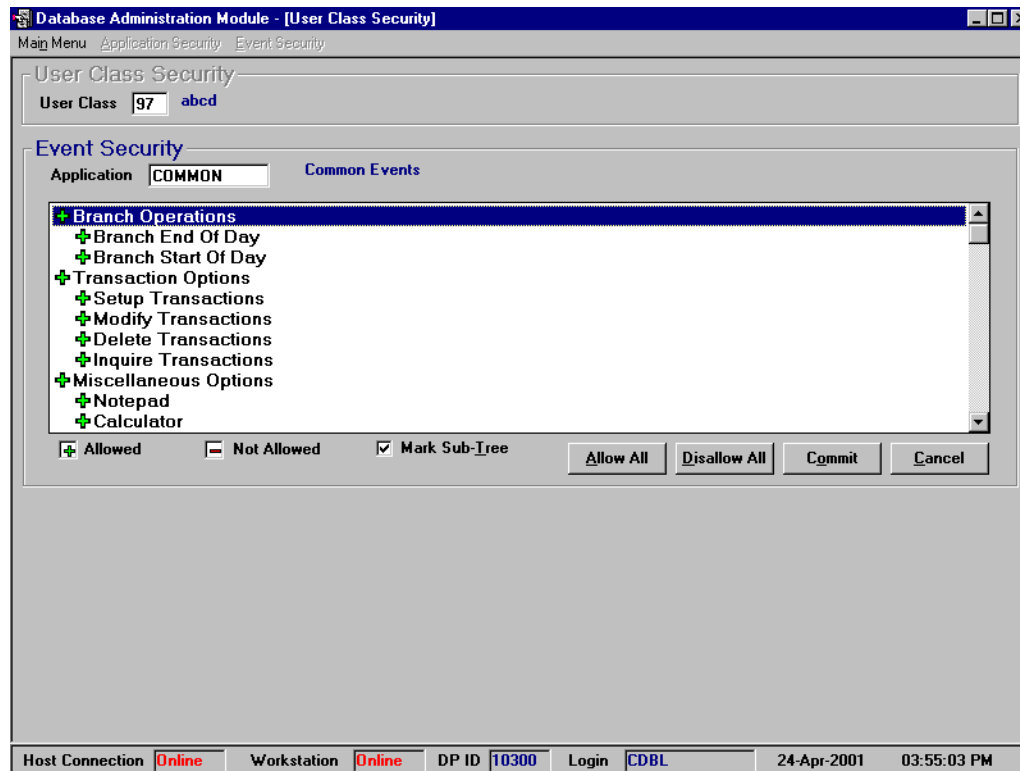


Figure 3.33 Screen for Module Security details

Field List

Field Type: U-Unique, M-Mandatory, A-Auto generated, Mo-Modifiable, N-Non Modifiable, R-Retrieved, C-Calculated

Field Name	Description	Field Type	Remarks
Allowed	Indicates that the "+" symbol is used to denote "Allowed" status	N	
Not Allowed	Indicates that the "-" symbol is used to denote "Not Allowed" status	N	
Mark Sub-Tree	Indicates whether the branches are to be marked as per the parent	M	

Buttons Available

Name	Purpose	Hot Key
Allow All	To allow the selected user class to access all events	Alt + A
Disallow All	To disallow the selected user class to access all events	Alt + D
Commit	To commit the transaction	Alt + O
Cancel	To cancel the operation and return to the previous screen	Alt + C

VeDAS Implementation	Database Administration
User Manual - DP	

Allow All Events

Activation Options

Menu Name	Purpose	Hot Key
Event Security > Allow All Events	To allow all events	Alt + E > A

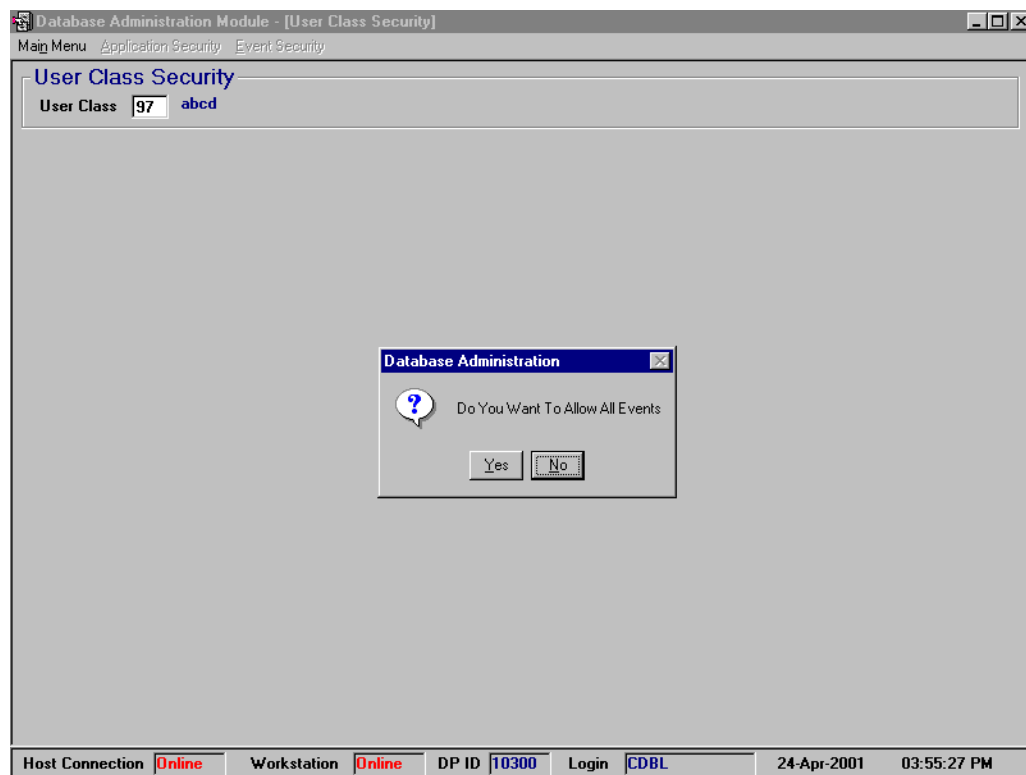


Figure 3.34 Screen to allow all events

Buttons Available

Name	Purpose	Hot Key
Yes	To allow access to all events for the selected user class	Alt + Y
No	To return to the previous screen	Alt + N

Disallow All Events

Activation Options

Menu Name	Purpose	Hot Key
Event Security > Disallow All Events	To disallow all events	Alt + E > D

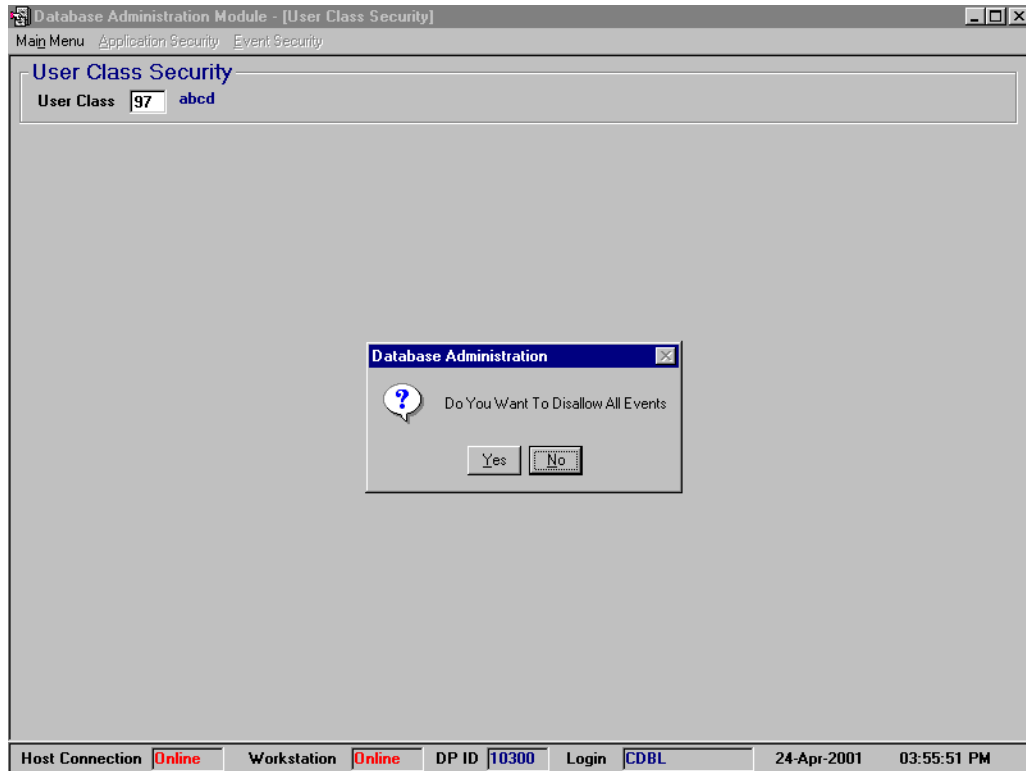


Figure 3.35 Screen to disallow all events

Buttons Available

Name	Purpose	Hot Key
Yes	To disallow access to all events for the selected user class	Alt + Y
No	To return to the previous screen	Alt + N

3.4.9 Workstation Setup

Activation Options

Menu Name	Purpose	Hot Key
Setup	To setup workstation	Alt + S

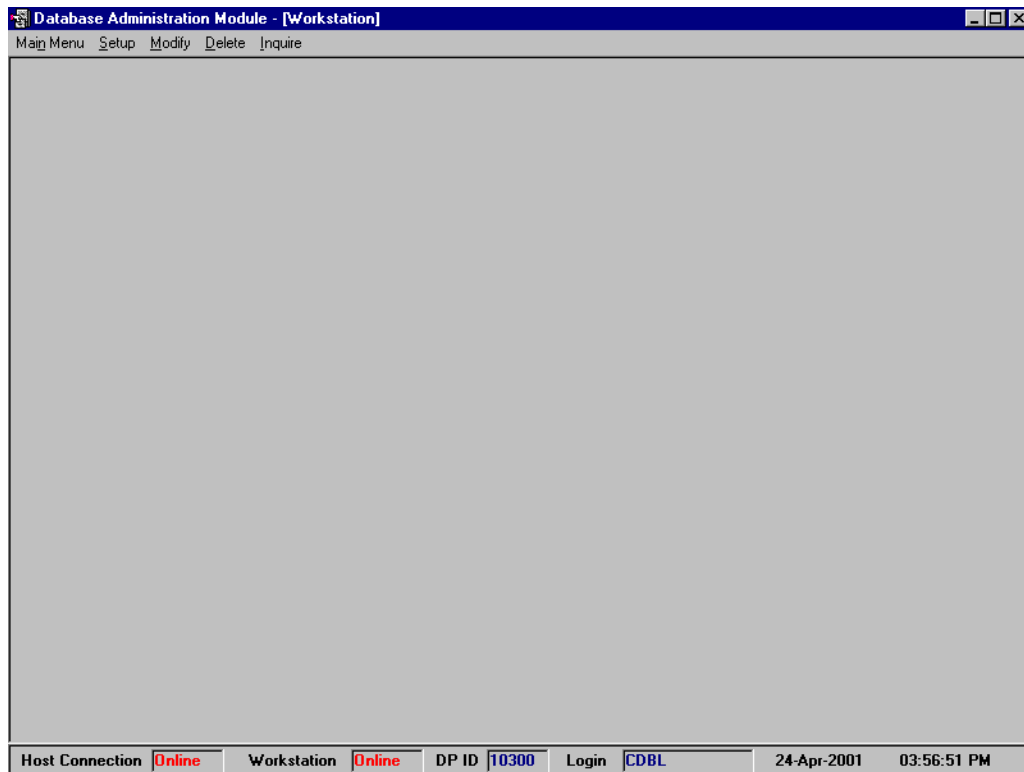


Figure 3.36 Initial screen for Workstation details

Database Administration Module - [Workstation - Setup]

Main Menu Setup Modify Delete Inquire

Workstation Details

Workstation ID: WSAC65

Physical Address: SMITHA

IP Address: 172.20.6.101

Location: CMCH

Default Gateway ID: CGS1

OpConsoleID: OPAC65

Commit Cancel

Host Connection Online Workstation Online DP ID 1 Login MIDC 24-Apr-2001 12:35:01 PM

Figure 3.37 Screen for Workstation Setup

Field List

Field Type: U-Unique, M-Mandatory, A-Auto generated, Mo-Modifiable, N-Non Modifiable, R-Retrieved, C-Calculated

Field Name	Description	Field Type	Remarks
Workstation ID	Unique identifier for the workstation	M, N	
Physical Address	Name of the workstation	M, Mo	
IP Address	IP Address of the workstation	M, Mo	
Location	Location of the address	M, Mo	
Default Gateway ID	Default Gateway ID	M, N	
OpConsole ID	Unique identifier for the opconsole	M, Mo	

Buttons Available

Name	Purpose	Hot Key
Commit	To commit the transaction	Alt + O
Cancel	To cancel the operation and return to the previous screen	Alt + C

3.4.10 Workstation Modify

Activation Options

Menu Name	Purpose	Hot Key
Modify	To modify workstation	Alt + M

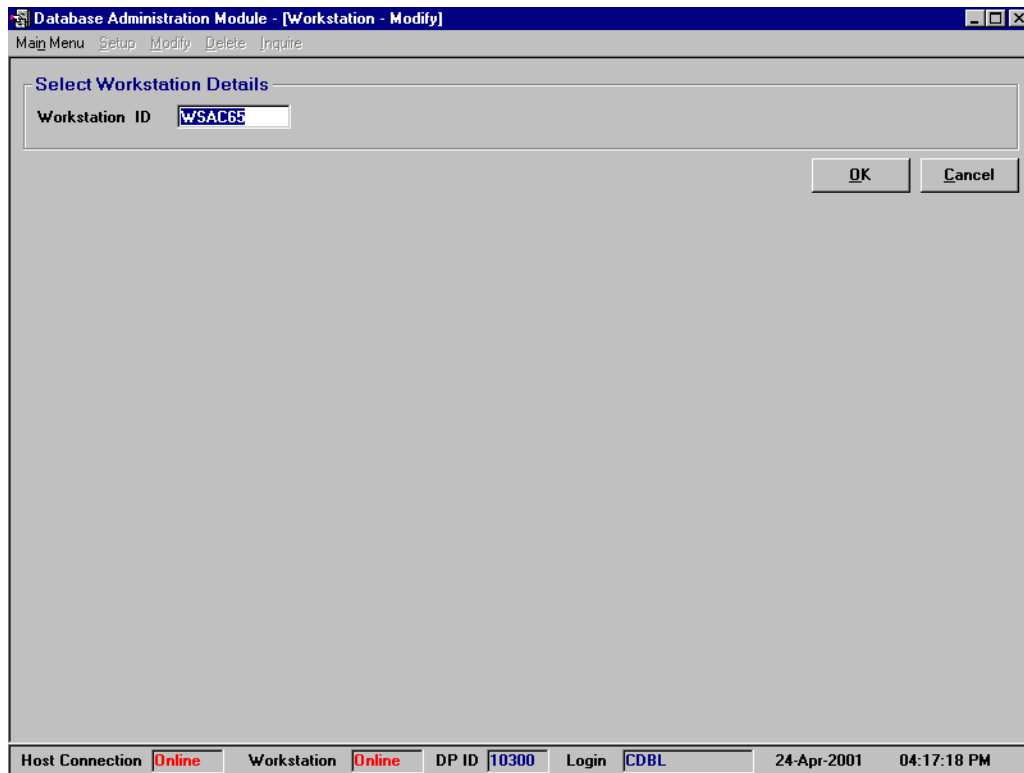


Figure 3.38 Initial screen for Workstation Modify

Selection Criteria

Selection Option	Fields	Selection Type
Workstation ID	Workstation ID	This is a mandatory criterion

Buttons Available

Name	Purpose	Hot Key
OK	To show the details for the selected workstation	Alt + O
Cancel	To cancel the operation and return to the previous screen	Alt + C

Database Administration Module - [Workstation - Modify]

Main Menu Setup Modify Delete Inquire

Workstation Details

Workstation ID: WSAC65

Physical Address: SMITHA

IP Address: 172.20.6.101

Location: cmch

Default Gateway ID: CGS2

OpConsoleID: OPAC65

Commit Cancel

Host Connection Online Workstation Online DP ID 10300 Login CDBL 24-Apr-2001 04:17:51 PM

Figure 3.39 Screen for Workstation Modify

Buttons Available

Name	Purpose	Hot Key
Commit	To commit the transaction	Alt + O
Cancel	To cancel the operation and return to the previous screen	Alt + C

3.4.11 Workstation Delete

Activation Options

Menu Name	Purpose	Hot Key
Delete	To delete workstation	Alt + D

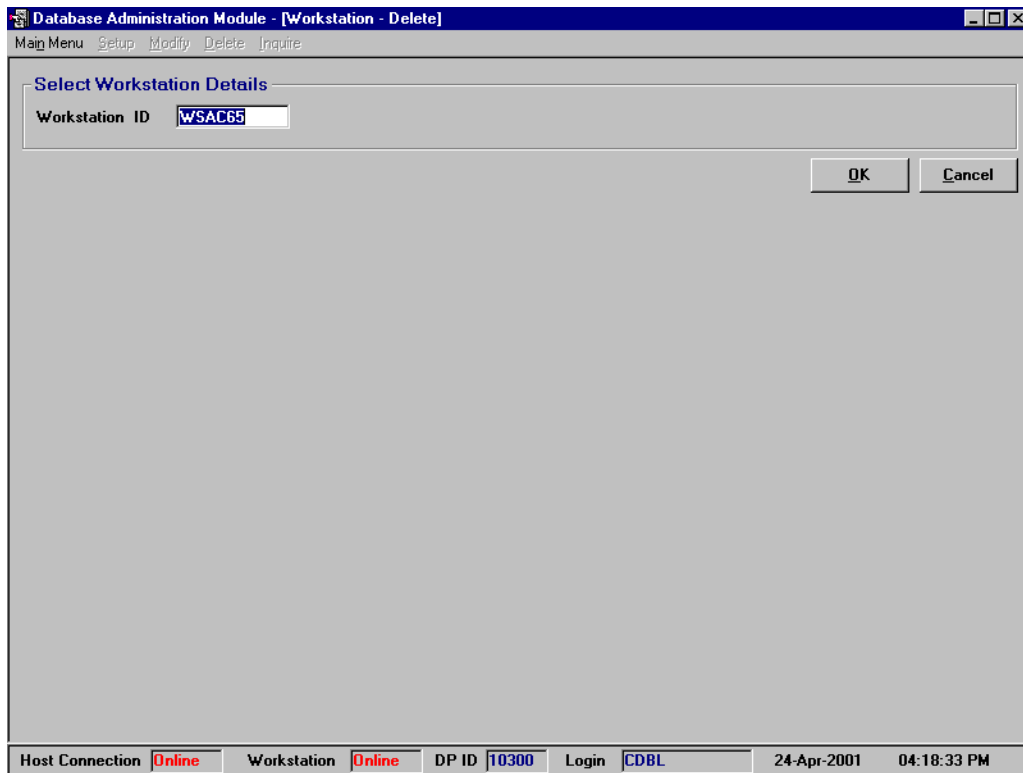


Figure 3.40 Initial screen for Workstation Delete

Selection Criteria

Refer to Selection Criteria for Modify Transaction

Buttons Available

Name	Purpose	Hot Key
OK	To show the details for the selected Workstation	Alt + O
Cancel	To cancel the operation and return to the previous screen	Alt + C

Database Administration Module - [Workstation - Delete]

Main Menu Setup Modify Delete Inquire

Workstation Details

Workstation ID: WSAC65

Physical Address: SMITHA

IP Address: 172.20.6.101

Location: cmch

Default Gateway ID: CGS2

OpConsoleID: OPAC65

Delete Cancel

Host Connection Online Workstation Online DP ID 10300 Login CDBL 24-Apr-2001 04:20:36 PM

Figure 3.41 Screen for Workstation Delete

Buttons Available

Name	Purpose	Hot Key
Delete	To delete the record for the selected workstation	Alt + O
Cancel	To cancel the operation and return to the previous screen	Alt + C

3.4.12 Workstation Inquire

Activation Options

Menu Name	Purpose	Hot Key
Inquire	To inquire workstation	Alt + I

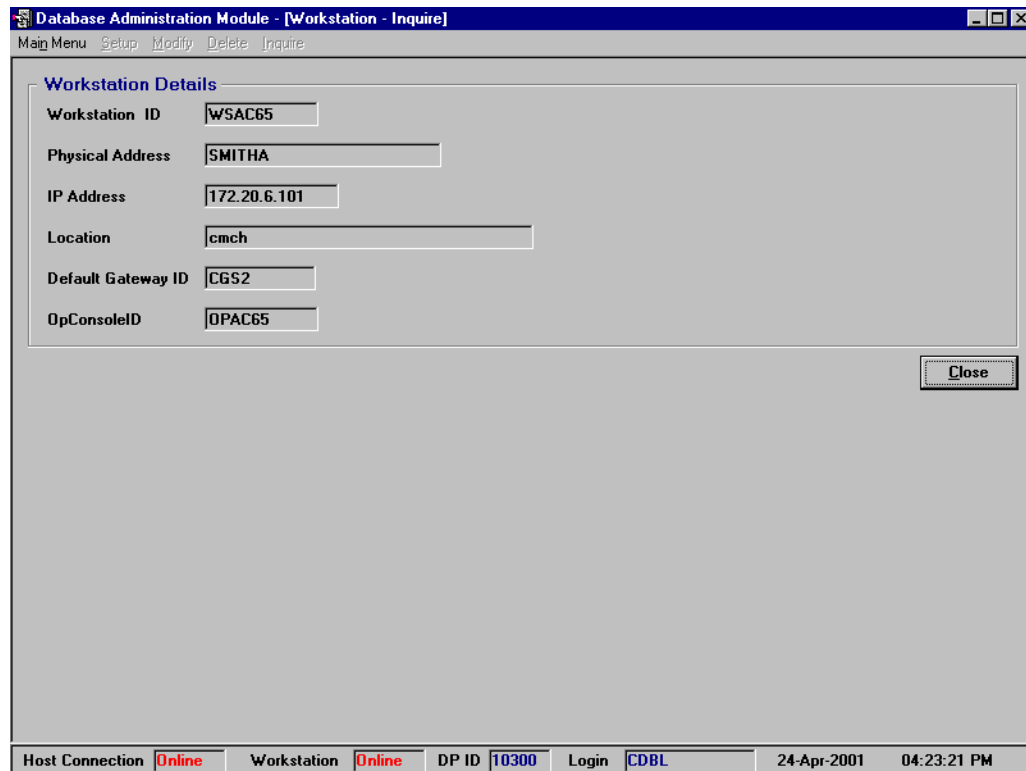
Figure 3.42 Initial screen for Workstation Inquiry

Selection Criteria

Refer to Selection criteria for Modify transaction

Buttons Available

Name	Purpose	Hot Key
OK	To show the details for the selected Workstation	Alt + O
Cancel	To cancel the operation and return to the previous screen	Alt + C



Database Administration Module - [Workstation - Inquire]

Main Menu Setup Modify Delete Inquire

Workstation Details

Workstation ID: WSAC65

Physical Address: SMITHA

IP Address: 172.20.6.101

Location: cmch

Default Gateway ID: CGS2

OpConsoleID: OPAC65

Close

Host Connection: Online Workstation: Online DP ID: 10300 Login: CDBL 24-Apr-2001 04:23:21 PM

Figure 3.43 Screen for Workstation Inquiry

Buttons Available

Name	Purpose	Hot Key
Close	To return to the previous screen	Alt + C

3.5 Acknowledgements/Reports Available

List of Reports

File Name	Type	Availability
Applications and Events allowed	Request	
DBA Security Maintenance Log	Request	

The above reports can be viewed through the Master Reports module.